



**1 Heath Way, Radlett
WD7 9FG
Guide Price £829,950**

Situated on the prestigious Harperbury development between Shenley and Radlett, and offered in excellent condition is this lovely double fronted house that oozes kerb appeal.

The property offers generous living accommodation comprising four bedrooms (two with fitted wardrobes), two bathrooms (including one en-suite), guest cloakroom, spacious double aspect living room and capacious kitchen, family and dining room with separate utility room.

In addition, the property benefits from being located on a plot with a hidden second garden, detached garage and driveway for three cars. This is a fantastic opportunity to secure this well maintained and naturally bright home.

EPC Rating Band C.



Entrance Hall

Downstairs WC

Lounge

20'9 x 11'4 (6.32m x 3.45m)

Kitchen Dining Room

20'9 x 10'8 (6.32m x 3.25m)

Utility

7' x 5' (2.13m x 1.52m)

Landing

Master Bedroom

11'7 x 10'7 (3.53m x 3.23m)

En-Suite Shower Room

Bedroom Two

10'9 x 10'7 (3.28m x 3.23m)

Bedroom Three

9'10 x 9'6 (3.00m x 2.90m)

Bedroom Four

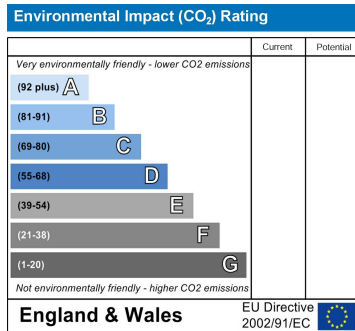
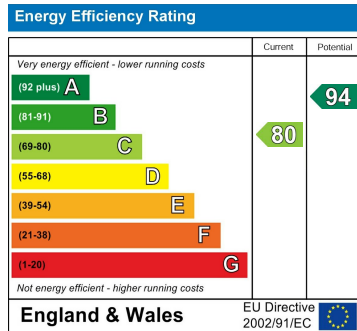
9'6 x 8'2 (2.90m x 2.49m)

Family Bathroom

Rear Garden

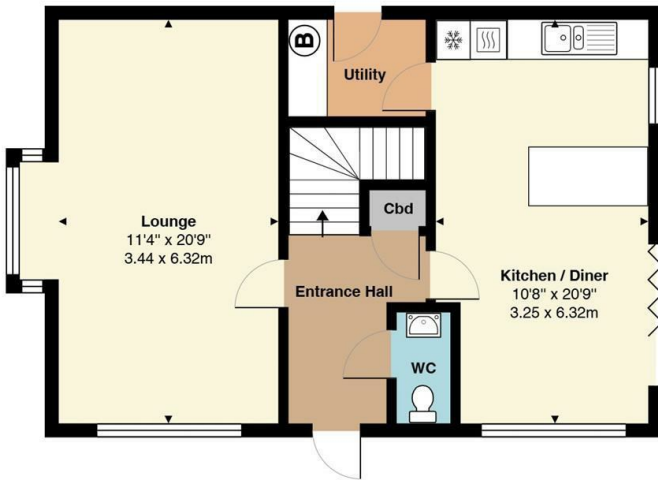
Garage & Parking

Detached single garage with off street parking for up to 3 cars.

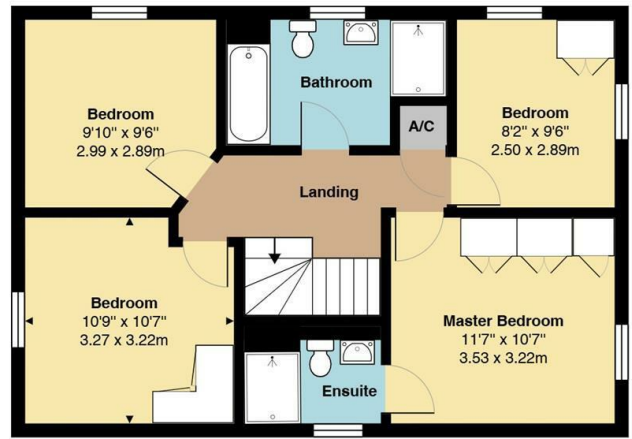


20 Andrew Close, Shenley | Herts WD7 9LP
 Tel: 01923 856464 | Email: info@shenleyestates.com





Ground Floor
Area: 641 ft² ... 59.6 m²



First Floor
Area: 629 ft² ... 58.4 m²

Total Area: 1270 ft² ... 118.0 m²
All measurements are approximate and for display purposes only

